



# AM 115

**Forced Removal  
Detector**

The forced removal detector DORMA AM protects safes, weapons cabinets, vending/gambling machines, show-cases, objets d'art and window grilles against forced removal.

The forced removal detector consists of a spacer ring, rated break point plate, tamper-monitored cover and and 4 m of interconnecting cable. Ideal for installation with M10 to M16 fasteners.

**Technical data**

Dimensions: 35 x 25 x 45 mm  
 Switching capacity: max. 30 V DC, 100 mA  
 Anti-tamper contact: max. 30 V DC, 100 mA (NC)  
 PCB breakage resistance if properly fitted as per instructions: approx. 5000 N

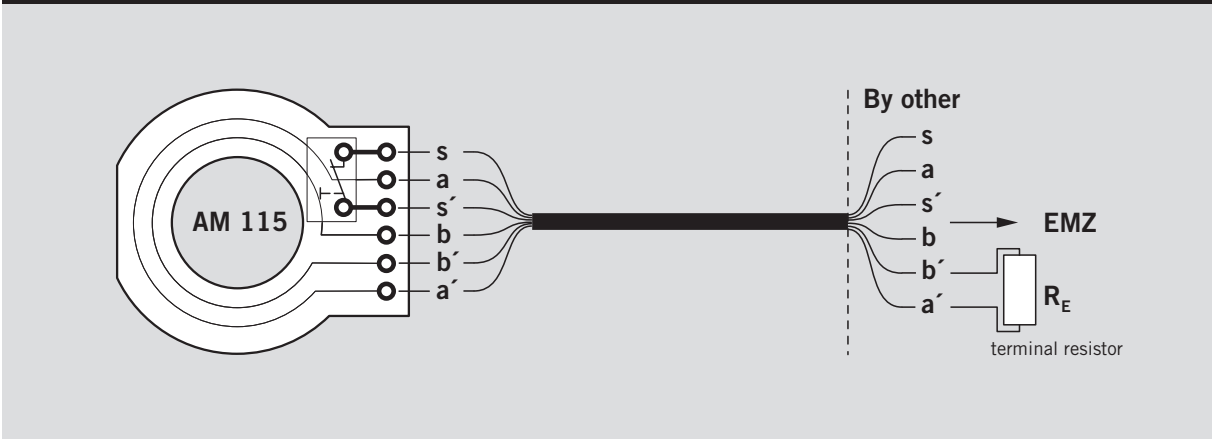
**Specification text**

The forced removal detector DORMA AM is approved by the VdS (German Association of Property insurers) for use in intruder alarm systems up to **Classe C** approval Certificate **No. G 194 032**

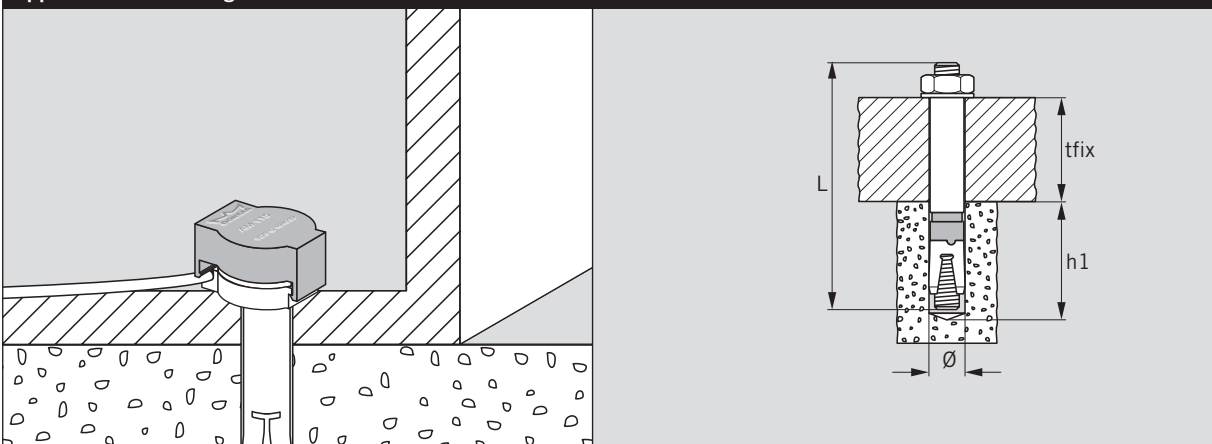
**Benefits**

- easy integration in intruder alarm systems
- anti-tamper monitoring contact
- closed-circuit design

**Terminal assignments and function**



**Applications and fixing details**



<b>Anchors</b>				
Type	Max. fixing height tfix (mm)	Drill Ø (mm)	Min. hole depth h1 (mm)	Anchor length L (mm)
SLD31	100	15	90	195
SLD41	100	18	105	214
SLD51	100	24	125	238

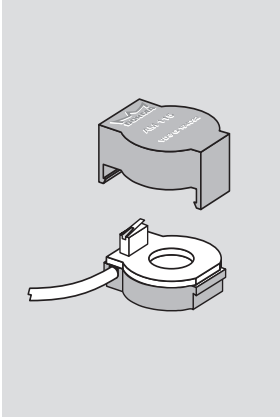
Product description	Order No.	🖨
---------------------	-----------	---

**DORMA AM 115**

Forced Removal Detector VdS\*-Class C, Nr. G 194032  
 For the protection of valuables containers, safes, weapons cabinets, vending/gambling machines, showcases, objets d'art, window grilles etc. against unauthorised or forced removal.  
 Consisting of a spacer ring, PCB rated for breakage and alarm initiation, cover cap with anti-tamper monitoring contact and 4 m of interconnecting cable.  
 For use in combination with M 10 - M 16 screw fasteners.  
 \*German Association of Property Insurers

Dimensions: 35 x 25 x 45 mm  
 Switching capacity: max. 30 V DC, 100 mA  
 Anti-tamper contact: max. 30 V DC, 100 mA (NC)

19730115 🖨 AM

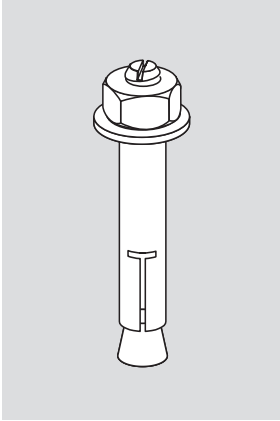


**DORMA SLD Heavy-duty Anchor**

Object (valuables container) secured by placing over male thread. Designed for use in conjunction with the AM 115 forced removal detector.

- SLD 31** M10/100
- SLD 41** M12/100
- SLD 51** M16/100

19733100  
 19734100  
 19735100



2 per pack

🖨

Additional information is available from a range of electronic media.  
 The abbreviated designation next to the computer symbol 🖨 indicate the search terms to be used.



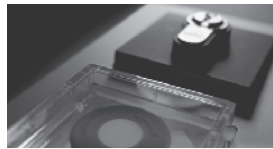
**Door Control**



**Automatic**



**Glass fittings  
and Accessories**



**Security/Time  
and Access (STA)**



**Movable walls**

**DORMA GmbH + Co. KG**  
DORMA Platz 1  
D-58256 Ennepetal  
Tel. +49 23 33/7 93-0  
Fax +49 23 33/7 93-4 95

The address of a subsidiary/  
representation in your area you  
can find at the DORMA website:  
[www.dorma.com](http://www.dorma.com)