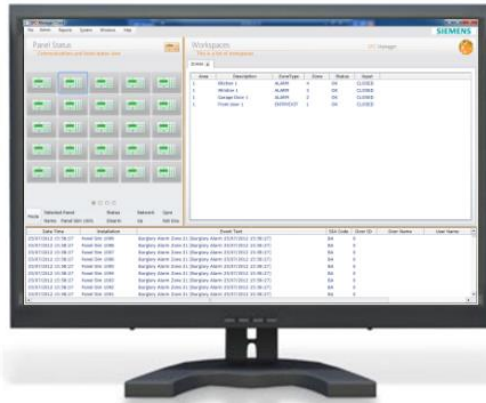


# SPCS610 SPC Manager Software

Remote User management software

VANDERBILT



## IP Based Alarm receiver

Vanderbilt's SPCS610 allows for the remote configuration of users, calendars, doors and profiles on SPC Panels.

### Key Features include:

- SPC Communications
- Users be added to multiple panels
- Communication link monitoring
- SPC Panel control
- SPC Panel status information
- Operators
- Reporting on SPC panels and operators

### Functions

- Multi-panel remote operation
- Remote user management
- Remote data access management

### Applications:

- Secure user management
- Building managers
- Distributed systems

### Languages:

- English
- German
- French



## Features & Benefits

### ■ Multi-panel remote operation

SPC Manager is a software-based user management tool, which allows you to manage, monitor and control system resources (for example, doors, areas and outputs) across multiple SPC systems in a quick and efficient way.

### ■ Remote user management

SPC Manager supports the concept of global user data across a complete install base of SPC systems, which allows central management of user information for a group of SPC systems in an efficient way

### ■ Multi-panel remote access data management

SPC Manager allows you to remotely manage access data such as cards, calendars and access rights across multiple systems. Its powerful SPC system user profiles provide an easy and quick way to create new users in a daily working environment.

# SPCS610 SPC Manager Software

## Remote User management software

VANDERBILT

### ■ Technical Data

#### System Architecture

SPC manager server and client	Windows client/server application
SPC manager Database	Microsoft SQL Server 2005 or 2008

#### System Specification

Max. No. Connections	5	Basic License*
	100	Standard License
	1000	Advanced License
Max. No. SPC Manager clients:	1	Basic License*
	10	Standard License
	50	Advanced License
Max. No. of users in SPC Manager DB:	10,000	
Max. No. of users in panel:	Up to 2500 (depending on panel type)	

#### Server

Operating System	Microsoft Windows Server 2008 R2 Microsoft .NET Framework 4.0 Microsoft SQL Server 2005 or 2008
Hardware	Intel Core i5-2400 CPU @ 3.1GHz 500GB HD available hard disk space 1024 x 768 or higher resolution display

#### Client

Operating System	Windows XP 32bit Windows 7 (32bit and 64bit) Microsoft .NET Framework 4.0
Hardware	Pentium Dual-Core (E2160) 1MB Cache, 1.80 GHz 500GB HD available hard disk space 1024 x 768 or higher resolution display

VANDERBILT

# SPCS610 SPC Manager Software

Remote User management software

VANDERBILT

## ■ Ordering Data

Type	Art. No.	Description	Weight*
SPC	S54549-F103-A100	SPCS610.000	NA
SPC	S54549-F106-A100	SPCS610.100 Basic License SPC Manager	NA
SPC	S54549-F107-A100	SPCS610.200 Standard License for SPC Manager	NA
SPC	S54549-F105-A100	SPCS610.300 Advanced License for SPC Manager	NA

\* Total weight of the product inclusive of the weight of its accessories and packaging.

## ■ Additional Ordering Data

Type	Art. No.	Description
<b>SPC Panels</b>		
SPC6350.320-L1	V54541-C118-A100	SPC control panel, 16-512 zones, Ethernet, G5 metal housing
SPC6330.320-L1	V54541-C105-C100	SPC control panel, 8-512 zones, Ethernet, G3 metal housing
SPC5350.320-L1	V54541-C117-A100	SPC control panel, 16-128 zones, Ethernet, G5 metal housing
SPC5330.320-L1	V54541-C107-B100	SPC control panel, 8-128 zones, Ethernet, G3 metal housing
SPC5320.320-L1	V54541-C106-B100	SPC control panel, 8-128 zones, Ethernet, G2 metal housing
SPC4320.320-L1	V54541-C109-B100	SPC control panel, 8-32 zones, Ethernet, G2 metal housing
SPC4320.220-L1	V54541-C114-A100	SPC control panel, 8-32 zones, Ethernet, G2 housing with metal base and plastic cover

VANDERBILT

Learn more at [www.vanderbiltindustries.com](http://www.vanderbiltindustries.com)

VANDERBILT