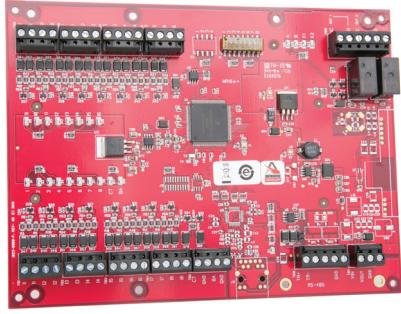


SECURITY MANAGEMENT SYSTEM (SMS)

VI-16INS3 16 Input Monitor Module



Overview

The Vanderbilt Industries 16 Input Monitor Module (VI-16INS3) is capable of supporting 16 general purpose inputs which can be individually set for normally-open or normally-closed operations and can be declared supervised and non-supervised. Individually configurable parameters can be set for sensitivity ranges, timing parameters and end-of-line resistance values.

Two programmable relay outputs can be configured for fail safe or fail secure operation, supporting "On", "Off", "Pulse", and "Repeating Pulse" commands.

The VI-16INS3 communicates directly to the VRCNX-A Reader Controller board. The VI-16INS3 supports universal triggers, which integrates any input associated with any output response or a multitude of output responses and can be used to integrate alarm control and/or elevator floor control. Includes enclosure.



✓ KEY FEATURES

- VI-16INS3 connects to the Vanderbilt VRCNX-A Reader Controller via RS-485 protocol
- 16 programmable supervised or unsupervised contact inputs
- Contacts can be defined as alarms, door status, egress, or other environmental conditions
- 2 Form "C" single pole/double throw, mechanically latching 5 A relay outputs
- Improved processor and increased memory
- Metal enclosure with hinged and dual screw door
- Connection for on-board tamper switch
- Tamper switch, lock and key option available



Specifications

Dimensions	6.0'W x 8.0'L x 1.0'H (152mm W x 203mm L x 25mm H)
Enclosure	12 1/4" H x 10 1/4" W x 2 3/4" D
Power Requirements	12-24 VDC +/- 10%, 350 mA maximum 12Vdc @ 300mA nominal 24Vdc @ 220mA nominal
Inputs	16 General purpose: programmable circuit type 2 Dedicated: Tamper and Power Monitor
Output Relays	Two Form-C Relays: Normally open contact (NO): 5A @ 30 Vdc resistive Normally closed contact (NC): 3A @ 30 Vdc resistive
Ambient Temperature	0—70 °C operational, -55—85 °C storage
Humidity	0 to 95% RHNC
Recommended Cable	18AWG/2 COND Stranded, Shielded, Twisted (RS485 data only)
Standards	UL 294 Recognized, CE Compliant, RoHS, FCC Part 15 Subpart B
Maximum RS485 (data) distance between reader controller to VI-16INS3 is 4,000 feet with local power	

Ordering Information

VI-16INS3

16 Input Monitor Module

Note: Can be ordered without enclosure. Use (NB) to specify no box.

OPTIONS

VLOCKRI

Enclosure Lock (comes with (2)
keys, tamper switch and cables)

VANDERBILT

vanderbiltindustries.com

@VanderbiltInd

Vanderbilt Industries

Vanderbilt Industries

2 Cranberry Road
Parsippany, NJ 07054

973 316 3900

an **ACRE**
company

06019-1219