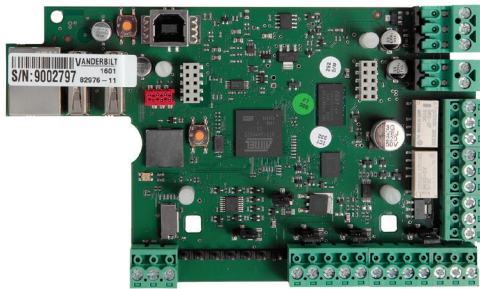


SECURITY MANAGEMENT SYSTEM (SMS)

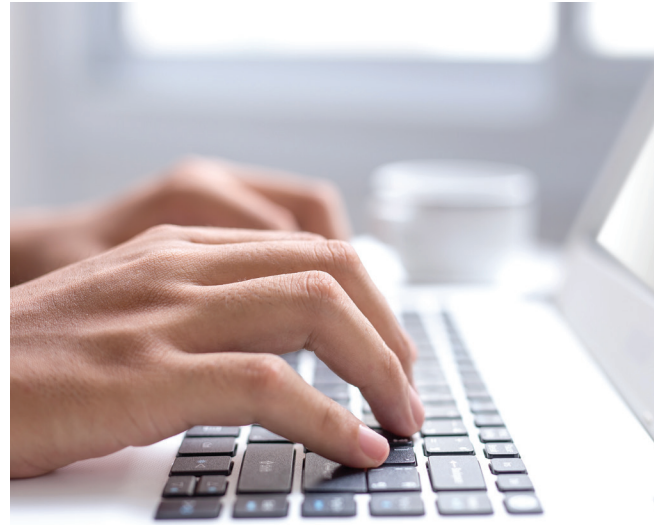
VSRC-A Dual Reader Controller



Overview

The Vanderbilt Industries Dual Reader Controller (VSRC-A) is an intelligent device with a modular approach. The VSRC-A is an independently programmable device that effectively combines the capabilities of a controller and two (2) reader interfaces into a single board. It communicates with the Security Management System software via TCP/IP protocol and can be connected to a variety of different read head technologies and electronic locking devices. The communication architecture is capable of being fully networked thereby saving the customer wiring and expensive installation labor costs.

The VSRC-A supports Enhanced Offline Mode - in the event of network connectivity loss, the system will utilize a local copy of the latest database and will cache transactions for upload once the network connection is restored. Visual on-board status indicators make for easy identification of processes during installation and service, including CIM communication, relay status, board type and more. Convenient on-board reset button allows for graceful shutdown of controller. Includes enclosure with a tamper switch, lock and key.



✓ KEY FEATURES

- On-board reader interface support for one (1) or two (2) doors (depending on I/O support required)
- Four contact inputs
- Two form C, single pole/double throw, mechanically latching 2A relays
- Configurable for support of up to 16 devices (on-board reader interfaces disabled with 16 device configuration; VRCNX-A Controller with backplate recommended for >2 devices for easy installation)
- On board 10/100 Base-T Ethernet connection
- Two RS-485 channels of 8 multi-dropped terminal strips
- User configurable password protection
- Fully encrypted using SSL certificate



Specifications

Dimensions 3.5"H x 6"W x 7/8"D

Enclosure 7 1/2"H x 8 1/4"W x 2 3/4"

Power Requirements 12-24 VDC

Power Consumption 12VDC: 200mA
24VDC: 125mA
(without read head)

Ambient Temperature -40°F to 131°F
-40°C to 55°C

Humidity 77°F@ 80%; 131°F@ 93%
25°C@ 80%; 55°C@ 93%

Recommended Data Cable 18 AWG/2 COND, stranded, shielded, twisted (up to 4000') to RS-485 channel devices

Recommended Power Cable 18 AWG/2 COND, stranded, shielded, twisted (up to 500'); devices beyond 500' should be powered locally

Requires a UL 294 power limited power supply capable of 4 hours standby power

UL 294 Certified

Compatible with SMS software v5.3.5 SP2 and higher as noted below:
• v5.3.5 SP2 to v6.3.5 supports one (1) on-board Reader Interface
• v6.4.0 and higher includes programming templates for support of (2) on-board Reader Interfaces

Ordering Information

VSRC-A Dual Reader Controller

OPTIONS

VRINX Single Reader Interface

VIONX-8 Input/Output Expansion Board

VRI-1S3 Single Reader Interface

VRI-2S3 Dual Reader Interface

VI-16INS3 Input Monitor Module

VI-16OS3 16 Relay Output Module

Note: Can be ordered without enclosure. Use (NB) to specify no box.

VANDERBILT

vanderbiltindustries.com

@VanderbiltInd

Vanderbilt Industries

Vanderbilt Industries

2 Cranberry Road

Parsippany, NJ 07054

973 316 3900

an **ACRE**
company

06030-1219